

| SPECIFICATIONS |                   |
|----------------|-------------------|
| ES NO.         | DESCRIPTION       |
| ES92-155       | CONVERSION-METRIC |

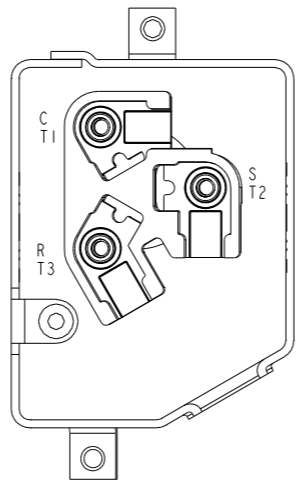
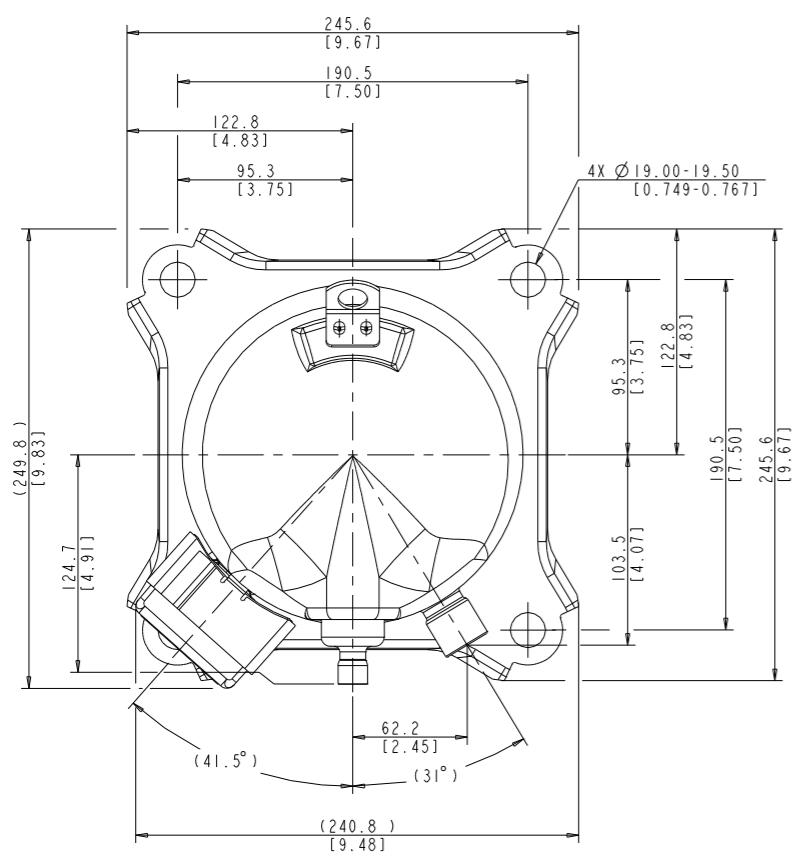
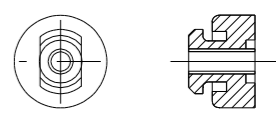
| MODEL NUMBER                                  |
|---|
| ZR46KC/KCE-TFD, TF5, TF7                      |
| ZR49KC/KCE-PFV, TFD, TFE, TF5, TF7            |
| ZR54KC/KCE-PFV, TFD, TFE, TF5, TF7            |
| ZR57KC/KCE-PFV, TFD, TFE, TF5, TF7            |
| ZR61KC/KCE-PFV, PFZ, TFD, TFE, TF5, TF7       |
| ZR67KW-PFV                                    |
| ZR68KC/KCE-PFV, PFJ, TFD, TFE, TF5, TF7       |
| ZR72KC/KCE-TF5, TFD, TFE, TF7, <del>TF9</del> |

NOTES:  
 1 ALL TOLERANCES  $\pm 1.50$  [0.060] UNLESS OTHERWISE SPECIFIED.

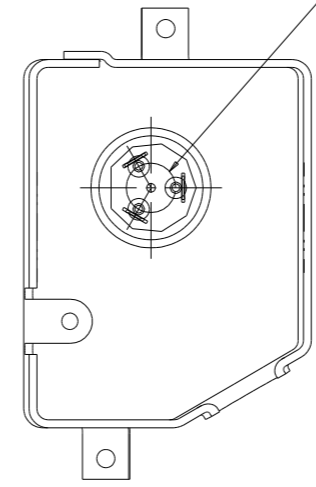
DUE TO ACCUMULATED ASSEMBLY TOLERANCES THE LISTED COMPONENTS MAY VARY FROM THE MOUNTING HOLES AS SHOWN BELOW:

- 2 ALL FITTINGS :  $\pm 3.0$  [0.12]
- 3 MOUNTING KIT.
- 3. TUBE ENDS MUST BE PLUGGED.

| 2                 |             |
|-------------------|-------------|
| GROMMET DUROMETER | 4 FOOT KIT  |
| 35-45             | 527-0116-00 |

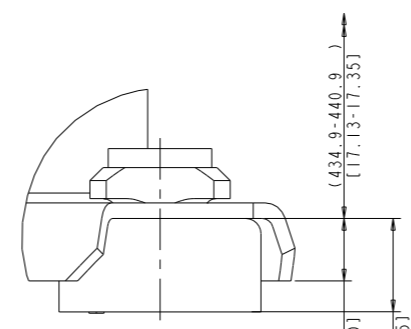
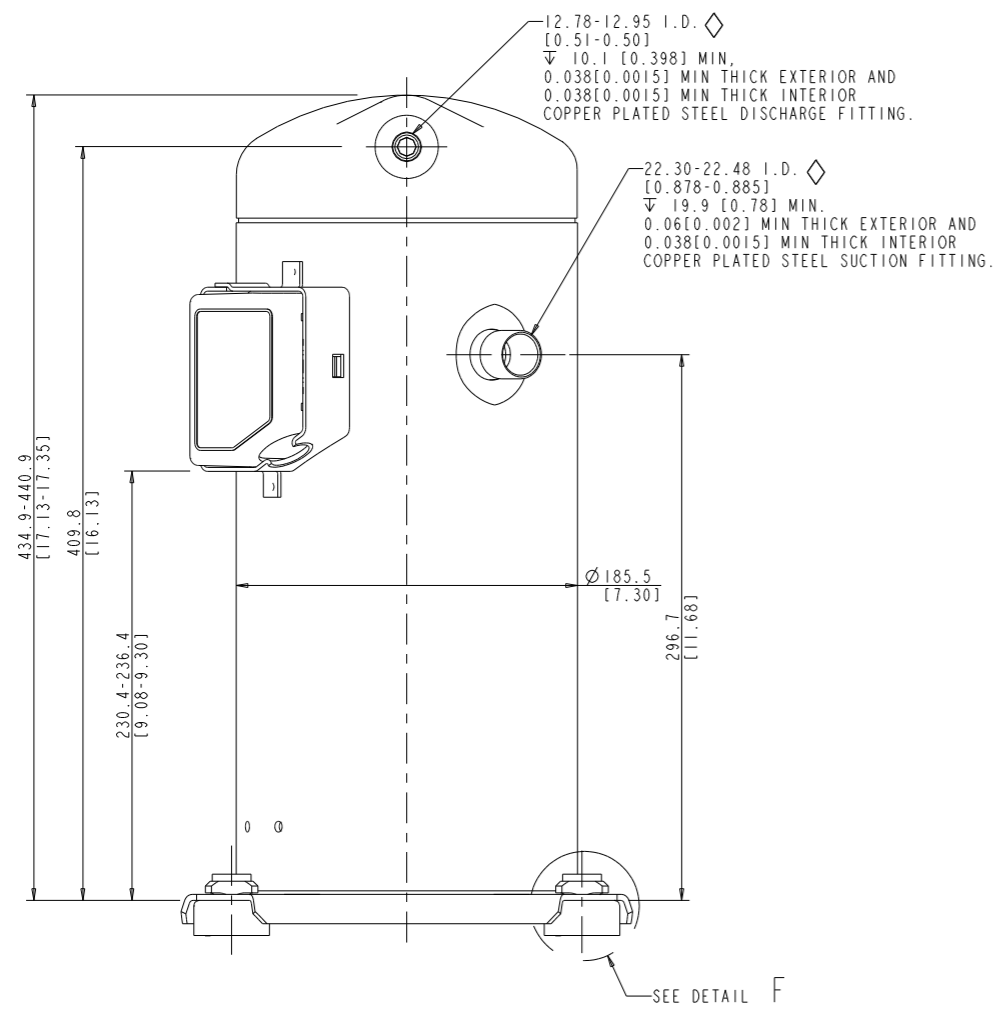


T' BOX LAYOUT  
OPTIONAL  
SCALE 3:2



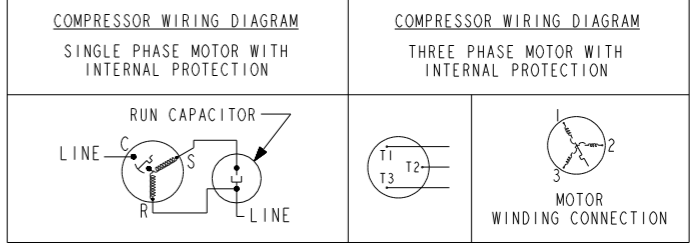
T' BOX LAYOUT  
STANDARD  
SCALE 3:2

Ø 17.45 PIN CIRCLE [Ø 0.687]  
 MODELS: TFD, TFE, TF7, TFM  
 Ø 13.46 PIN CIRCLE [Ø 0.530]  
 MODELS: PFV, PFJ, TFW, TF5



DETAIL F  
SCALE 2:1

USE COPPER CONDUCTORS ONLY. USE MINIMUM 75° C WIRE FOR AMPACITY DETERMINATION. INTERNAL MOTOR PROTECTION - ALLOW TIME FOR RESET. OVERCURRENT PROTECTION DEVICE RATING AND TYPE MUST BE IN ACCORDANCE WITH REGULATORY AGENCY END PRODUCT APPROVALS - SEE SYSTEM NAMEPLATE. CRANKCASE HEATER, WHEN APPLIED, MUST BE CONNECTED ONLY TO ITS RATED VOLTAGE. TO CORRECT IMPROPER ROTATION OF THREE PHASE MODELS, SWITCH ANY TWO SUPPLY LINES. REFER TO THE APPLICABLE SYSTEM WIRING DIAGRAM.



INTERPRET PER ASME Y14.5M-1994 AND EMERSON CLIMATE TECHNOLOGIES, INC. DESIGN STANDARDS DS2002 DO NOT SCALE DRAWING  
 THIRD ANGLE PROJECTION  
 CRITICAL PRODUCT CHARACTERISTIC  
 UNLESS OTHERWISE SPECIFIED DIMENSIONS ARE MILLIMETER OR (INCH)  
 TOLERANCES:  
 1-PLACE  $\pm$   
 2-PLACE  $\pm$   
 ANGULAR  $\pm$  N/A

|   |          |                                   |          |                                |      |      |
|---|----------|-----------------------------------|----------|--------------------------------|------|------|
| ECN001037   | 45       | OBSOLETE MODEL ZR72KC-TF9         | 05-13-08 | INY                            | EC   | KJR  |
| ECN000075   | 44       | ADDED MODEL ZR68KCE-TFE           | 10-31-06 | PNA                            | EC   | RST  |
| 32-1205-047   | 43       | REVISED DIMENSIONS AND NOTES      | 12-16-05 | BMK                            | GDD  | RST  |
| 32-0705-032   | 42       | REVISED & ADDED MODEL ZR54KCE-TF7 | 07-14-05 | PNA                            | GDD  | RST  |
| 32-0294-039   | 0        | RELEASED                          | 02-17-94 | DC                             | GDD  | RST  |
| ENG NOTICE NO.  | REV. NO. | REVISIONS                         | DATE     | BY                             | CHKD | APPR |
| CONFIDENTIALITY NOTICE  |          |                                   |          |                                |      |      |
| THIS DRAWING AND INFORMATION CONTAINED HEREIN ARE THE EXCLUSIVE PROPERTY OF EMERSON CLIMATE TECHNOLOGIES, INC. AND SHALL BE RETURNED UPON DEMAND AND SHALL NOT BE REPRODUCED IN WHOLE OR IN PART, DISCLOSED TO ANYONE ELSE OR USED, WITHOUT THE WRITTEN CONSENT OF EMERSON CLIMATE TECHNOLOGIES, INC. |          |                                   |          |                                |      |      |
| MATERIAL SPECIFICATION  |          | DRAWN BY                          |          | SUPERSEDES DWG. NO. / REV. NO. |      |      |
| N/A   |          | OTL                               |          | 497-2562-00 / 41               |      |      |
|   |          | DATE                              |          | DATE FORMAT:                   |      |      |
|   |          | 03-12-03                          |          | MM-DD-YY                       |      |      |
|   |          | SCALE                             |          | SHEET 1 OF 1                   |      |      |
|   |          | 3:4                               |          | DRAWING NUMBER                 |      |      |
|   |          |                                   |          | 497-2562-00                    |      |      |
| TITLE   |          | REF DWG-WELD COMP ASSM            |          | SHEET 1 OF 1                   |      |      |
|   |          |                                   |          | 5                              |      |      |